



# CHRYSLER

## MODELS / MODELLE

300 Series  
Alliance  
Avenger  
Caliber  
Caravan  
Cherokee  
Commander

Compass  
Crossfire  
Dodge  
Eagle  
Grand Caravan  
Grand Cherokee

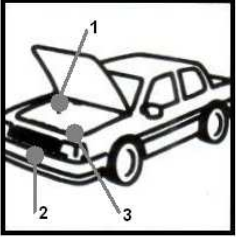
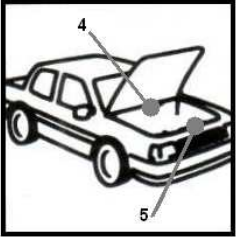
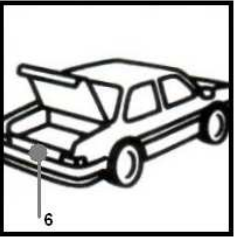
Intrepid  
Jeep  
Journey  
Liberty  
Neon  
Nitro  
Patriot

Plymouth  
Prowler  
PT Cruiser  
RAM Truck  
Sebring  
Sebring Convertible

Sprinter  
Stealth  
Stratus  
Stratus Cabrio  
Truck  
Viper  
Vision

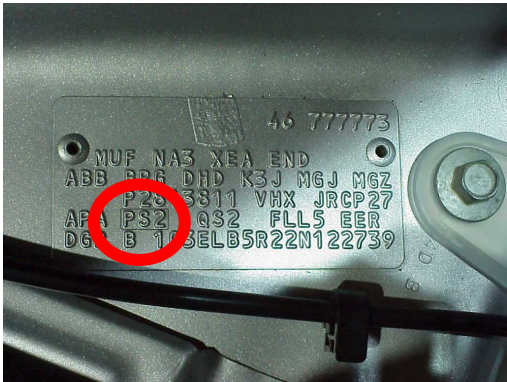
Voyager  
Wrangler

## VIN / TYPENSCHILD

**VIN PLATE LOCATIONS**

1. Neon, Sebring
2. Wrangler
3. Stratus Cabrio
4. PT Cruiser
5. Stratus, Voyager
6. Grand Cherokee

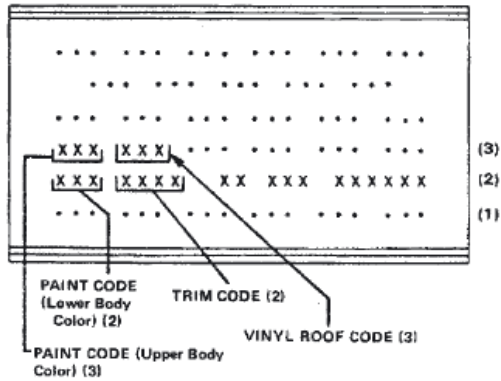


VIN PLATE LOCATION  
GRAND CHEROKEE

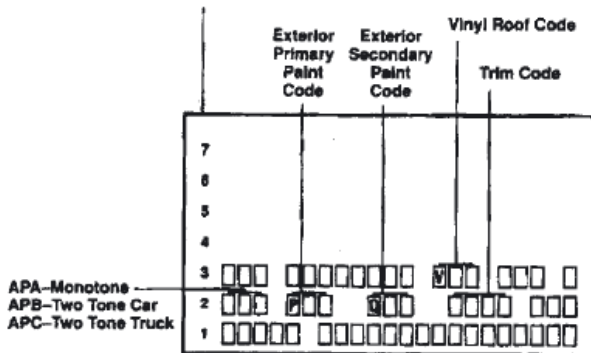
VIN PLATE CHRYSLER  
PAINTCODE = PS2

## COLOR IDENTIFICATION PLATE

→ 1993

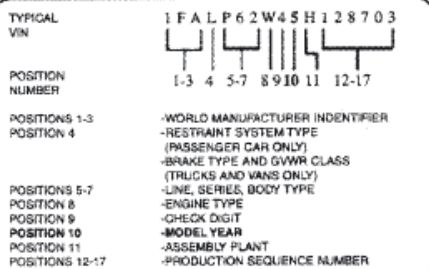


1993 →



# VINformation

### CHECK THIS EXAMPLE





### 1st Position of the VIN# (Vehicle Identification Number)

This digit breaks down the Country of Production for a vehicle sold in the U.S.A.

- 1=USA (Domestic Manufacturer)
- 2=Canada (All Manufacturers)
- 3=Mexico (All Manufacturers)
- 4=USA (Captive Imports and/or Joint Ventures)
- J= Japan (All Manufacturers)
- K=Korea (All Manufacturers)
- W=Germany (All Manufacturers)
- X=Former Soviet Union (All Manufacturers)

VIN Model Year ID 10th Character	Model Year
A	1980
B	1981
C	1982
D	1983
E	1984
F	1985
G	1986
H	1987
J	1988
K	1989
L	1990
M	1991
N	1992
P	1993
R	1994
S	1995
T	1996
V	1997
W	1998
X	1999
Y	2000
1	2001
2	2002
3	2003
4	2004
5	2005

**SHARED MODELS & COLORS / GEMEINSAME MODELLE & FARBTOENE**

		<p>Shared colors</p>	<p>Shared paintcodes</p>
<p><b>Stealth</b></p>	<p><b>3000GT</b></p>	<p>Yes</p>	<p>Partly</p>